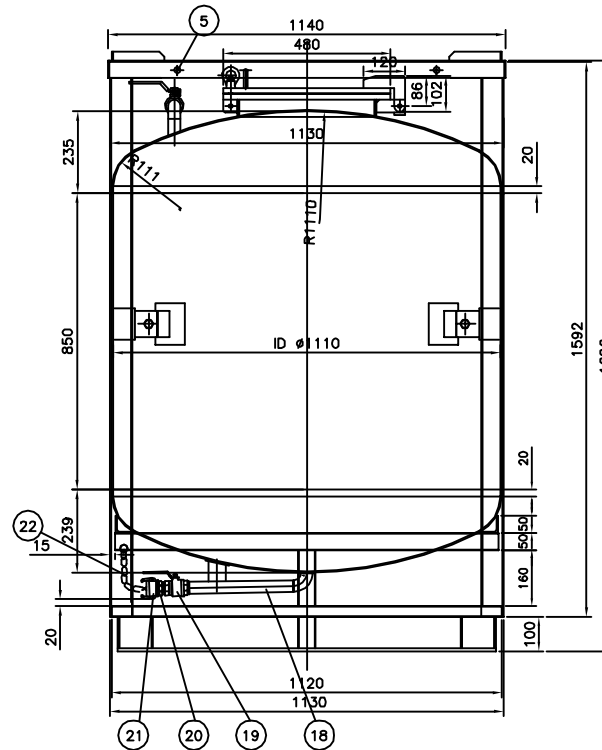
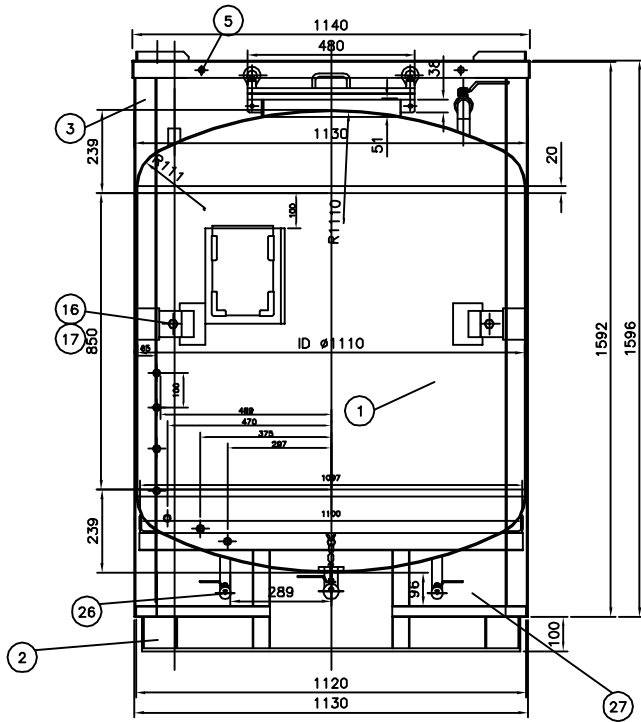


Section A-A'(1/5)
(Detail of Manhole)



2	Safety valve	1	3.5kg/cm ³	air	
1	Tank	1	20 kpa	air	
			200 kpa	hydraulic	
			allowable pressure	Test	REMARKS

28	Level gauge	1	3/4"	PTFE tube Type	
27	Steam Inlet	1	3/4"	SUS304	Adapter
26	Steam Outlet	1	3/4"	STS304	
25	Steam Pipe	1	3/4"	STS304	Outlet
24	Inform plate	1	B5 size	PVC	
23	Name plate	1	160x120x0.5t	SUS304	
22	Chain	1	L=350		
21	Dust cap(634-B)	1	2"		Outlet
20	Adapter(633-F)	1	2"		
19	Ball valve	1	2"		
18	Outlet elbow & pipe	1	2"		Outlet
17	Plain/spring washer	4/4	3/8"		
16	Hex head bolt/Nut	4	3/8*1*1/4		
15	Ball valve	1	3/4"		Air vent
14	Socket w/Plug	1	8A(1/4")		
13	Safety valve	1	20A(3/4")		
12	Eye nut	8	M12		
11	Hinge bolt	8	M12x80		
10	Hex bolt w/U-nut	1	3/8*1*1/4		f. Hinge
9	Pin C w/E-ring	8	10	SUS304	
8	Gasket	1	400Ax5K	EPDM	
7	Manhole flange	1	480x15t	SUS304	
6	Manhole cover	1	480x15t		
5	Truss head bolt/nut	8	M8x30		
4	Upper frame ass'y	1	50*50*4t		
3	Frame ass'y	1	65x65x12x4t		
2	Pallet ass'y	1	150x30x1.4t/FB9t		
1	Tank ass'y	1	All 4t	SUS304	

No.	DESCRIPTION	QTY	DWG No./SIZE	MATERIAL	REMARKS
TOLERANCE		DATE: 14.6.8	All SUS304		SCAI
DESIGN			TITLE		N/S
CHECK			SUS Container(운반08-06)		SHEI
APP'D		S.W.Kim	DWG No. KS-S1500-A1-1		SHEE